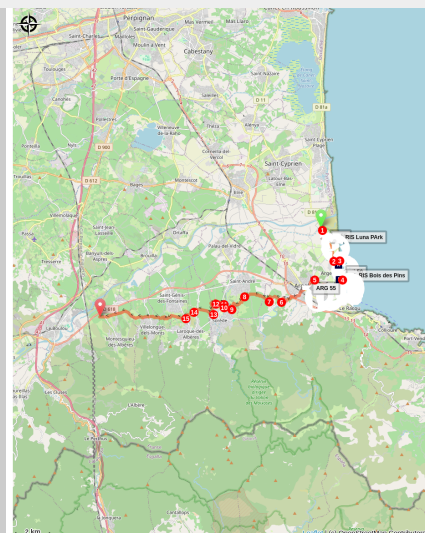


EV8 Argelès-sur-Mer / Montesquieu

Albères - ARGELES SUR MER



(OTI)



A beautiful variety of landscapes: From the seaside to Vallespir, passing through the foothills of the Albères.

The EuroVelo 8 links Athens to Cadiz. We invite you to discover the section that crosses the Pyrénées-Méditerranée area between Argelès-sur-Mer and Le Boulou. This route, starting by the sea, will take you through lively Argelès, a bustling seaside resort, before leading you into the peaceful countryside and across the vineyards of the foothills.

Do not hesitate to leave the cycle path to explore our typical villages, such as Saint-Genis-des-Fontaines, with its Romanesque cloister, abbey church, and its famous lintel.

Useful information

Practice : Cycling

Duration : 3 h

Length : 24.7 km

Trek ascent : 199 m

Difficulty : Medium

Type : Traversée

Themes : Fauna, Flora, Point de vue, Histoire, Patrimoine, Piste Cyclable

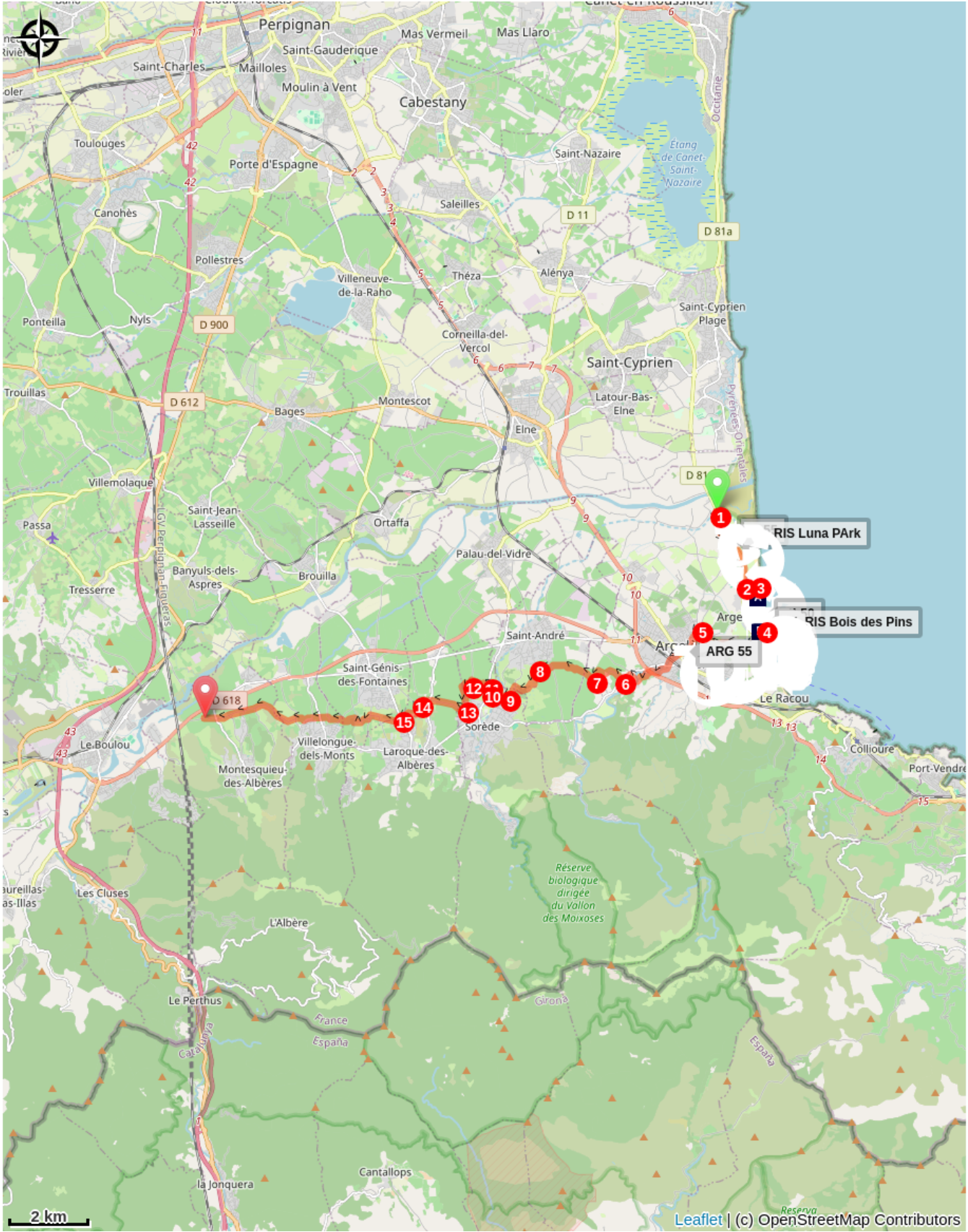
Departure : Argelès-sur-mer

Arrival : End of the EV8 cycle route section in Montesquieu

1. Follow the cycle path along the D81 on the left, towards Argelès. Cross the blue bridge over the Riberette and ride alongside Camping Le Littoral. At the Luna Park roundabout, continue straight ahead along Route du Littoral.
2. At the next roundabout, turn left onto Boulevard de la Méditerranée, staying on the cycle path.
3. At the end of the boulevard, continue straight on a gravel passage between two buildings and ride on until you reach the seafront promenade. Turn left on this promenade along the beach. After 500 m, you will arrive at the landscaped promenade. // ! \ This area is shared with pedestrians and is very busy during the summer season. // !
4. After passing the small funfair car park (on your right), turn right onto Avenue des Pins. At the Argelès-sur-Mer Tourist Office roundabout, turn left onto Avenue des Platanes. Then, at the 'Arrivée' roundabout, take the first exit on the right and follow Avenue Charles de Gaulle until the petrol station, where you turn right onto Route de la Mer. At the sports complex roundabout, turn right onto Avenue Molière.
5. At the next roundabout, take the third exit onto Rue des Trabucaires. Here, the cycle path runs along the street on the right. At the roundabout, cross the road to the opposite pavement to follow the cycle path and take the second exit, Rue du 14 Juillet. Continue straight ahead. You will cross a ford. Immediately after, turn right. The cycle path runs alongside a one-way street on the left and the Massane river on the right. Pass under the bridge and continue among the pine trees. At this point, the cycle path becomes a dirt track. // ! \ This section is shared with pedestrians. // ! \ Cross the small footbridge at the end of the car park and continue straight until you reach Route de Sorède. When you arrive there, turn left, then take the first right onto Rue du Moulin Mars, and continue along Rue des Micocouliers, then Chemin du Roua, which passes under the D914. You will pass Auberge du Roua. Continue, then turn right, cross the river, and rejoin Route de Sorède, where you turn left.
6. Turn at the first street on the right, which winds up to Chemin des Vignes.
7. Turn right and arrive at Chemin de la Carrerasse. Continue to the right, then take the first left. Continue along the path that crosses Chemin de la Pave.
8. At the river, cross over and turn left onto Rue de les Coscolledes. Continue, then cross the river again and reach Chemin de Saint-André. Caution: you will pass through a residential area with possible traffic. Turn left.
9. After the houses, take the second street on the right, then at the end of the street turn left and take the first right after a hairpin bend. Cross over the river "Tassio" on a ford.
10. Climb back up the road and now cross Route de Palau (D11). Turn right (traffic calming).
11. Turn left to join Chemin de la Petite Gabarre, then turn left again.
12. Next, turn right to reach Chemin de la Gavarra Baixa. Connection with the Albères loop - 'Crafts of yesterday and today' - starts here.

13. After the 'washing station' for farm machinery, turn right and continue straight ahead. After crossing a ford, cross Avenue des Baléares (take great care here, cars drive fast and visibility is poor!), then continue straight across another ford.
14. To follow the EV8, turn left to rejoin the paved cycle path 200 m further on (or continue straight into the village centre of Saint-Genis-des-Fontaines to see the famous lintel and, if you wish, visit the cloister).
15. Follow the path and the ground markings to Montesquieu. From here, you may continue your ride towards Le Boulou.

On your path...



 The Camp Monolith (A)

 Pine Wood (B)

All useful information

Advices

Follow traffic rules. Be cautious, as some sections of the route are shared with cars.

Bring a snack and stay well hydrated.

Wearing a helmet is mandatory for children and strongly recommended for adults.

Environmental sensitive areas

Along your trek, you will go through sensitive areas related to the presence of a specific species or environment. In these areas, an appropriate behaviour allows to contribute to their preservation. For detailed information, specific forms are accessible for each area.

Zone Natura 2000 Directive Habitat

Sensitivity period:

Zone Natura 2000 Directive Oiseaux

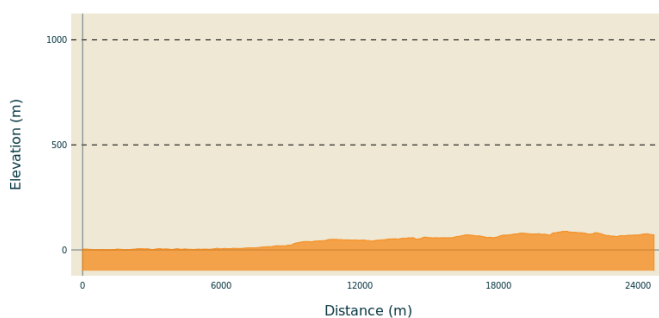


Réserve Naturelle du Mas Larrieu

Sensitivity period: January, February, March, April, May, June, July, August, September, October, November, Decembre

Réserve Naturelle du Mas Larrieu

Altimetric profile



Min elevation 1 m
Max elevation 89 m

Transports

Buses 1€

Access

D81

On your path...



The Camp Monolith (A)

The monolith at the camp marks the southern entrance to the Argelès-sur-Mer camp, which was opened in early February 1939 to intern some of the refugees who had fled Spain during "La Retirada." Over 100,000 refugees, including women and children, passed through the camp until summer 1939, all sleeping directly on the sand in makeshift shelters. The camp was reorganized and reopened following the declaration of war in September 1939. After France's defeat in June 1940, the camp became more international, with refugees from Northern and Eastern Europe, including foreign Jews, and the return of Spanish workers. The Vichy government used it as one of the main camps in southern France, interning French nomads there in the autumn of 1940.

People from over fifty nationalities lived together behind the barbed wire at Argelès. These "undesirables" were confined on a beach where living conditions were extremely harsh, with high mortality rates, particularly among infants. In 1941, the Ministry of the Interior transferred most of the internees to the Rivesaltes camp and deported some Spaniards and international brigadiers to camps in Algeria. By June 1942, with only a hospital remaining, the Argelès-sur-Mer camp was converted into a French Youth Work Camp before closing permanently in November. Erected in 1999, this monolith pays tribute to all the refugees who passed through the camp.

Attribution : Mémorial du camp d'Argelès



Pine Wood (B)

If you're looking for a place to relax in the shade of maritime pines, this is the perfect spot. You'll also find picnic facilities just a few meters from the beach shopping alleys.

Attribution : Stéphane Ferrer