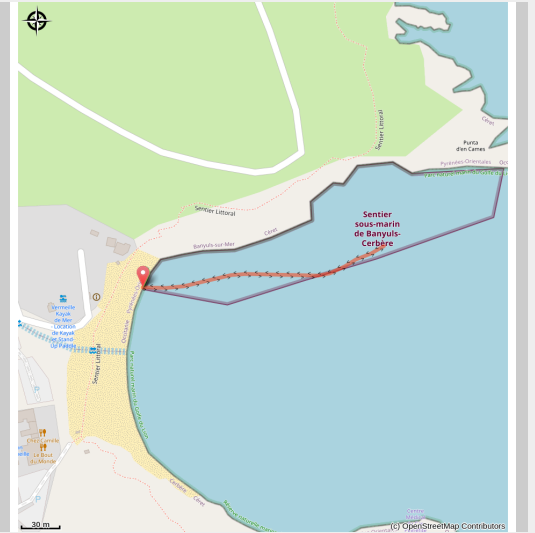


# The underwater path

Côte Vermeille - BANYULS SUR MER



Randonnée Palmée (Nostra Mar)

*A magnificent and well protected bay to discover*

In a few meters of water, observe and explore the rocky bottoms to discover the beauty of the underwater life of the reserve

## Useful information

Practice : Scuba diving

Duration : 1 h

Length : 0.4 km

Trek ascent : 92132 m

Difficulty : Very easy

Type : Aller-retour

Themes : Fauna, Flora

# Trek

Departure : Beach of Peyrefite

Arrival : Beach of Peyrefite

Created in 2011, the Peyrefite underwater path is located north of the bay, in an area well sheltered from the wind "la tramontane". It can be visited while swimming with a mask, a snorkel and fins. The route is a recreational and original walk but it is also an educational space. The route is marked and bounded by a water line. There are five observation stations representing five different ecosystems (pebbles, Posidonia meadows, boulders, faults and drop offs). They are materialized by a buoy and an information panel each time. The buoys allow you to rest and help you discover the local underwater world thanks to the immersed explanatory panels. Renting an FM snorkel allows you to listen to comments on underwater life. It is also an option to enjoy this aquatic stroll. Visiting the underwater path is more than just swimming, it is an aquatic hike. You need a minimum of physical condition to complete the entire course (500 meters round trip for 30 minutes to 1 hour of exploration) and you must know how to swim. The course is supervised and safe by lifeguards during opening hours, but you have to be careful. The course is located in the reserve, at the limit of the integral protection zone. The frequentation of the site is significant (20,000 people per year). We must be attentive to the recommendations so as not to frighten the exceptional fauna of the reserve. Respect for the instructions is essential to preserve this place. Pay attention to the color flag (green, orange or red) if you want to enjoy your snorkeling hike.

For more information, do not hesitate to visit the website:

<https://www.ledepartement66.fr/dossier/la-reserve-marine-de-cerbere-banyuls/>

# On your path...



# All useful information

## **Advices**

For more information, don't hesitate to visit the website: [sentier sous-matin](https://www.santier-sous-matin.com)

## **Environmental sensitive areas**

Along your trek, you will go through sensitive areas related to the presence of a specific species or environment. In these areas, an appropriate behaviour allows to contribute to their preservation. For detailed information, specific forms are accessible for each area.



### **Réserve Naturelle Marine de Cerbère-Banyuls**

Sensitivity period: January, February, March, April, May, June, July, August, September, October, November, Decembre

Réserve Naturelle Marine de Cerbère-Banyuls

## **Zone Natura 2000 Directive Habitat**

Sensitivity period:

Zone Natura 2000 Directive Oiseaux

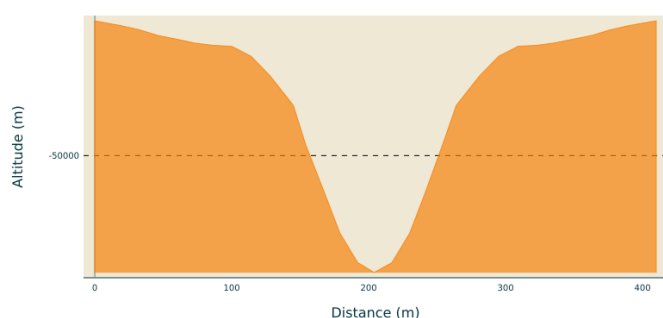


### **Zone Natura 2000 Directive Oiseaux**

Sensitivity period:

Zone Natura 2000 Directive oiseaux

## **Altimetric profile**



Min elevation -92799 m  
Max elevation -667 m