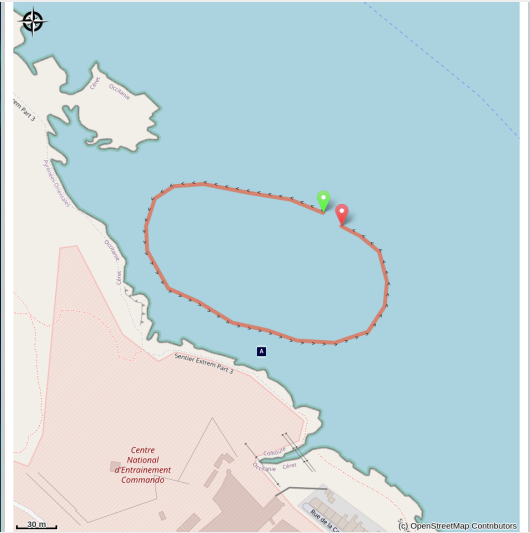
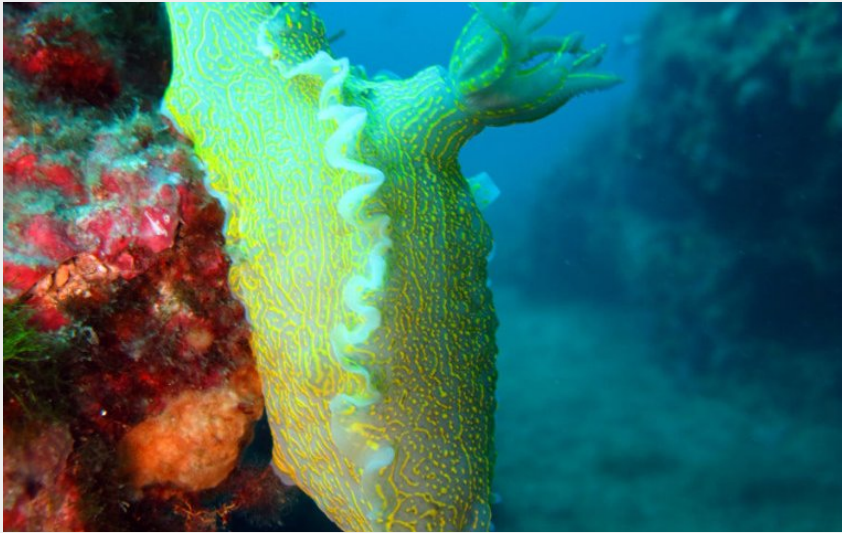


# La Moulade

Côte Vermeille - COLLIOURE



(Aquatile plongée)

## *La Moulade : the Mediterranean concentrated on this site*

Dive » in the history and on the military training campsite CNEC

### Useful information

---

Practice : Scuba diving

---

Duration : 1 h 30

---

Length : 0.5 km

---

Difficulty : Easy

---

Type : Boucle

---

Themes : Fauna, Flora,  
Géologie

# Trek

Departure : Port d'Argelès-sur-Mer, de Collioure, de Port-Vendres, Banyuls-sur-Mer et Cerbère

Arrival : Port d'Argelès-sur-Mer, de Collioure, de Port-Vendres, Banyuls-sur-Mer et Cerbère

At the foot of the Fortress of Collioure there's a small ledge out of the water almost completely covered with mussels (That explains the name of the dive : La Moulade) This site accessible to everybody offers an exceptional diversity.

For the snorkelers, the shallow rocky plateau allows you to discover from the surface, starfish, sea urchins, octopus and various schools of fish, or even some years, rays! On the dive side, letting you slide down the slope up to 9 meters, you might bump into a seahorse.

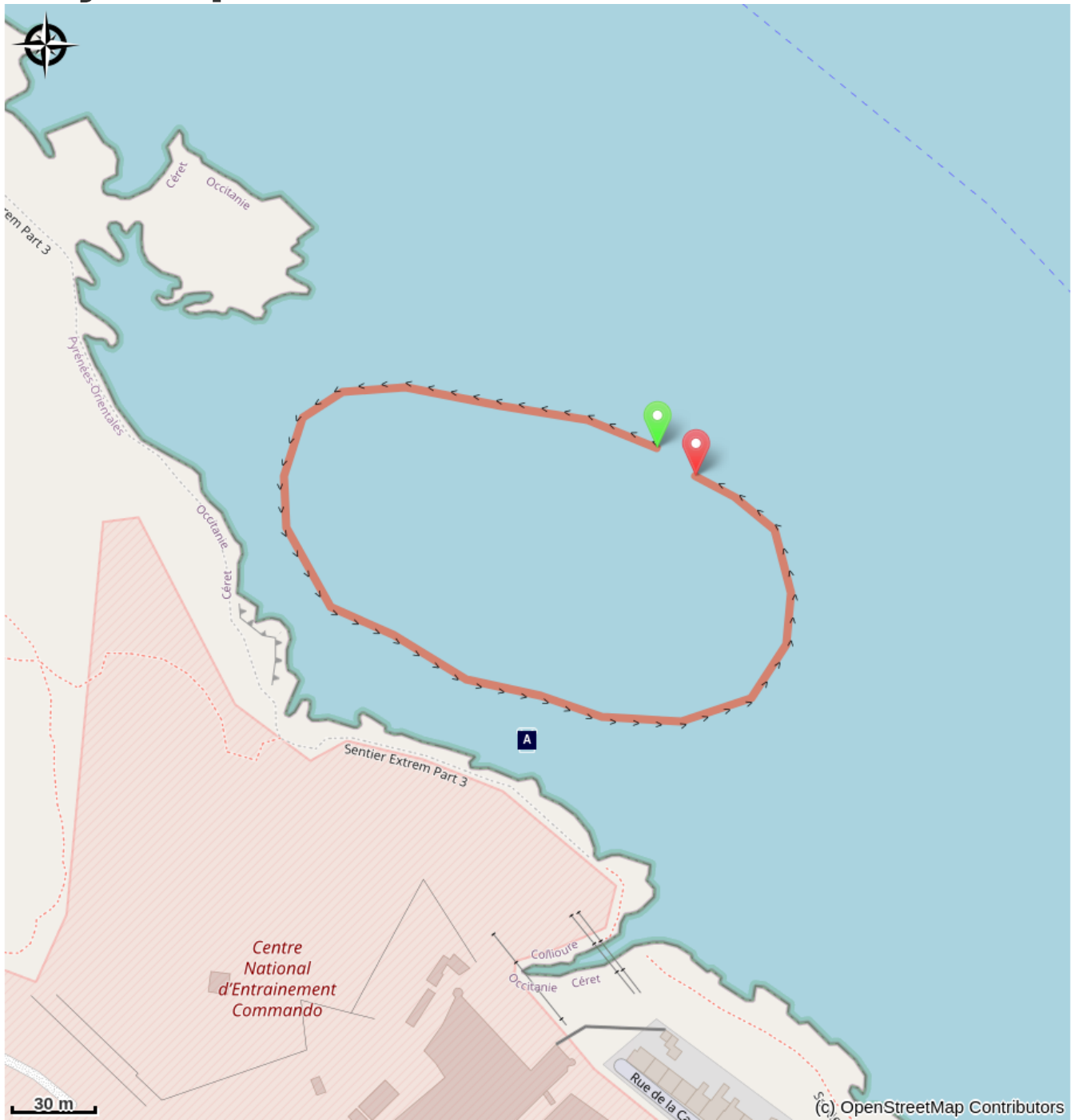
Always with the reef on the right, there is a clearing where castagnole (Chromis ) and Sar (Diplodus sargus) share the place near the little wrasses. Delighted by this show, then running 15 meters deep to join the coralligenous, On this live reef , we can discover some tens of holes sheltering beautiful lobsters, mostelles (phycis) and congers. Discovering the top of the parapies lined with "sea potatoes " one can see, between parazohantus and hydraires, various slugs all more colorful than each other, thuridilles, giant dories, flabellines and the famous banyulensis endemic to our coast.

Back to lesser depth, returning to the rocky plateau, a huge fault appears separating the rock in two parts. The left wall is absolutely exceptional and completely covered by a multitude of "sea sponges" Then go up inside the fault while returning to the "roof" where barracudas and mules twirl backlit.

The dive ends in a magical atmosphere making the Moulade an exceptional dive site because of its different environments.

Returning to the boat in the middle of the fish banks on a shallow depth can extend the diving time to more than an hour for the happiness of all divers!

# On your path...



 Le CNEC (A)

# All useful information

## **Advices**

Go safe and be supervised by professional scuba diving from all the ports of the Côte Vermeille.

### **Argelès-sur-Mer:**

Argelès Plongée: 06 78 48 76 30 / 06 83 89 96 90 - Résidence Santa Maria Rue des Matelots

Aquatile Plongée: 06 16 51 31 06 - Résidence Atalaya 2 Place Magellan

Archipel Plongée: 04 68 95 71 03 / 06 25 59 35 77 - 8 Résidence les Villégiales

La Sirène Plongée : 04 68 81 60 58 - Camping la Sirène, route de Taxo

### **Collioure:**

CIP Collioure: 04 68 82 07 16 - 24 Rue Ravin du Coma Xeric

### **Port-Vendres:**

Paradis des bulles: 06 70 55 69 18 - Quai Fanal

Tech of Plongée: 06 58 55 41 04 -2 Quai Fanal

CAP Port-Vendres: 04 34 12 09 27 - 4 rue Jules Ferry

Scuba Passion: 06 07 56 03 73 - Plage des Tamarins Route de la Jetée

### **Banyuls-sur-Mer:**

Rédéris Plongée: 04 68 88 31 66 - Quai A Port Parking Méditerranée

AquaBlue Plongée: 04 68 88 17 35 - 5 Quai Georges Petit

Plongée Bleue: 07 85 75 67 45- 10 quai Georges Petit

### **Cerbère:**

Aloès Plongée: 06 33 33 18 44 - Résidence les Aloes Cap Peyrefite

Plongée Cap Cerbère: 04 68 88 41 00 - Route d'Espagne

## **Environmental sensitive areas**

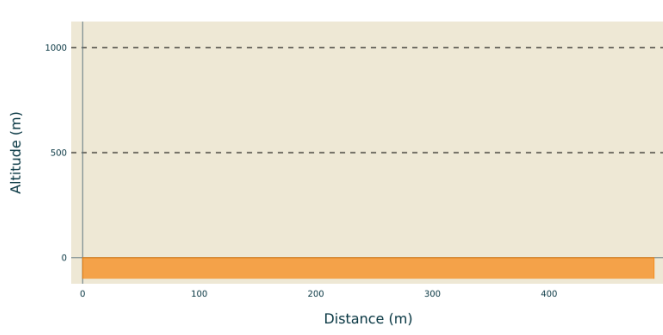
Along your trek, you will go through sensitive areas related to the presence of a specific species or environment. In these areas, an appropriate behaviour allows to contribute to their preservation. For detailed information, specific forms are accessible for each area.

### **Zone Natura 2000 Directive Habitat**

Sensitivity period:

Zone Natura 2000 Directive Oiseaux

## **Altimetric profile**



Min elevation 0 m  
Max elevation 0 m

# On your path...

---



## Le CNEC (A)

This site is the training place for military interns at the National Commando Training Centre (CNEC). Supervised by army divers, the trainees must complete the course of Audace Nautique (PAN), one of the most feared exercises. After 24 hours of non-stop maneuvers, soldiers equipped with heavy boots and rifles must cross many underwater obstacles. Put yourself in the shoes of combat swimmers (F.Brun - Le Roussillon Submarine - Ed. GAP).

Attribution : marianne.net