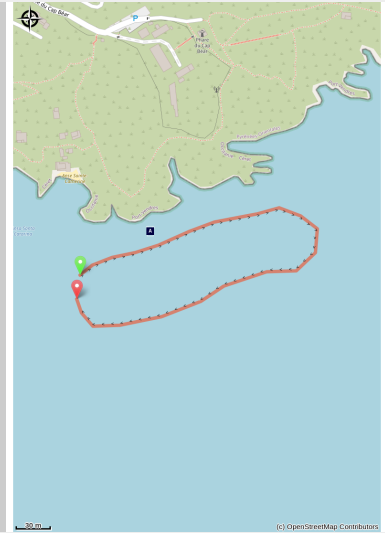


# Sainte Catherine

Côte Vermeille - PORT-VENDRES



Baptême Sainte Catherine (CAP Port-Vendres)

*Discover Sainte Catherine and its mysterious cave*

Dive in and enjoy the smugglers history

## Useful information

Practice : Scuba diving

Duration : 1 h 30

Length : 0.5 km

Difficulty : Medium

Type : Boucle

Themes : Fauna, Flora,  
Géologie

# Trek

Departure : Port d'Argelès-sur-Mer, de Collioure, de Port-Vendres, Banyuls-sur-Mer et Cerbère

Arrival : Port d'Argelès-sur-Mer, de Collioure, de Port-Vendres, Banyuls-sur-Mer et Cerbère

The Sainte Catherine' site is a privileged place south of Cap Béar. In the morning, the sun light is at the right axe to give a maximum light and reveal the beauty of this site. Facing the cliff, we can see some rocky outcrops on the left, a little hidden by the color of the rock that blends with the color of the cliff. In the water, swim up to the cliff to realize that two pretty slots are detached from this great rocky wall which goes under the light house of Cap Béar. A few meters further up toward the bay of Paulilles, a small rock entrance opens onto a natural pull hidden along the cliff.

Underwater, Sainte Catherine offers a great geological variety between the slots of the cliff, beautiful rock walls plains of scree and the vast coral massif down to 25 meter depth. Several varieties of sars cross on the site, bream and gilthead bream complete the picture.

Between two walls of rock, we can often find corbs, protected species that are usually seen in the marine reserve. From time to time for the lucky ones, it's possible to see a crouper lost in this place or a common dentex, big fish abundantly present in the reserve but more stealthy on the other site of rock. Octopus, congers, moray eels complete the picture, in the middle of several varieties of sea urchins anemones and crustaceans hidden in small rock slots.

To discover Sainte Catherine, snorkeling and scuba diving are both ideal activities !

# On your path...



(c) OpenStreetMap Contributors

 The Smugglers' Cave (A)

# All useful information

## **Advices**

Go safe and be supervised by professional scuba diving from all the ports of the Côte Vermeille

### **Argelès-sur-Mer:**

Argelès Plongée: 06 78 48 76 30 / 06 83 89 96 90 - Résidence Santa Maria Rue des Matelots

Aquatile Plongée: 06 16 51 31 06 - Résidence Atalaya 2 Place Magellan

Archipel Plongée: 04 68 95 71 03 / 06 25 59 35 77 - 8 Résidence les Villégiales

La Sirène Plongée : 04 68 81 60 58 - Camping la Sirène, route de Taxo

### **Collioure:**

CIP Collioure: 04 68 82 07 16 - 24 Rue Ravin du Coma Xeric

### **Port-Vendres:**

Paradis des bulles: 06 70 55 69 18 - Quai Fanal

Tech of Plongée: 06 58 55 41 04 -2 Quai Fanal

CAP Port-Vendres: 04 34 12 09 27 - 4 rue Jules Ferry

Scuba Passion: 06 07 56 03 73 - Plage des Tamarins Route de la Jetée

### **Banyuls-sur-Mer:**

Rédéris Plongée: 04 68 88 31 66 - Quai A Port Parking Méditerranée

AquaBlue Plongée: 04 68 88 17 35 - 5 Quai Georges Petit

Plongée Bleue: 07 85 75 67 45- 10 quai Georges Petit

### **Cerbère:**

Aloès Plongée: 06 33 33 18 44 - Résidence les Aloes Cap Peyrefite

Plongée Cap Cerbère: 04 68 88 41 00 - Route d'Espagne

## **Environmental sensitive areas**

Along your trek, you will go through sensitive areas related to the presence of a specific species or environment. In these areas, an appropriate behaviour allows to contribute to their preservation. For detailed information, specific forms are accessible for each area.

### **Zone Natura 2000 Directive Habitat**

Sensitivity period:

Zone Natura 2000 Directive Oiseaux

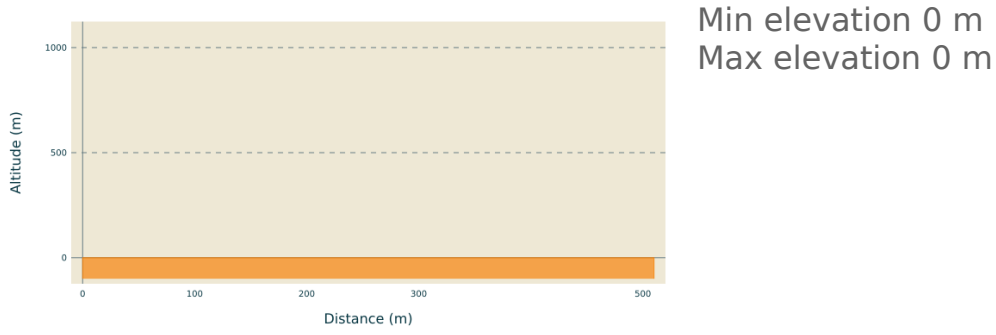


### **Zone Natura 2000 Directive Oiseaux**

Sensitivity period:

Zone Natura 2000 Directive oiseaux

## **Altimetric profile**



## Transports

Bus à 1€

# On your path...

---



## The Smugglers' Cave (A)

On the southern part of the Cap Béar, a mysterious cave is extended into the rock, overlooked by the customs path (or smugglers' path). This cave is only accessible by the sea. Snorkeling or kayaking are two excellent ways to access the cave. It is said that the smugglers came to hide their goods in this cave because it was impossible to access the land. The strong winds and currents of winter kept these treasures safe from customs.

Attribution : Plongée Port-Vendres