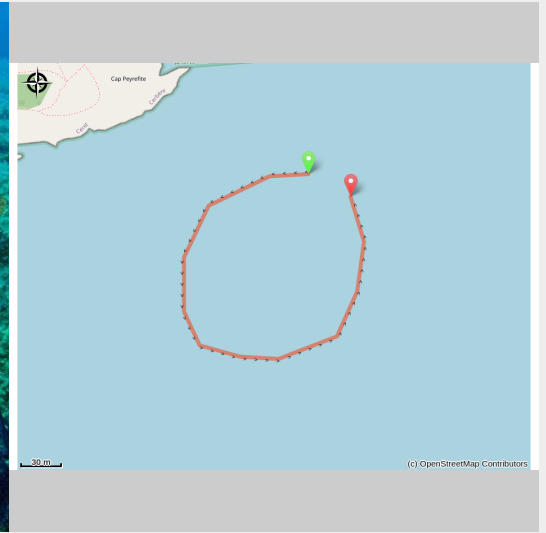


# Cap Peyrefite

Côte Vermeille - CERBERE



Cap Peyrefite (Plongée Cap Cerbère)

## *Reliefs and varied landscapes*

Uncrowded site that offers a very active and abundant underwater life

## Useful information

---

Practice : Scuba diving

---

Duration : 1 h

---

Length : 0.4 km

---

Difficulty : Medium

---

Type : Boucle

---

Themes : Fauna, Flora,  
Géologie

# Trek

Departure : Port d'Argelès-sur-Mer, Collioure, Port-Vendres, Banyuls-sur-Mer and Cerbère

Arrival : Port d'Argelès-sur-Mer, Collioure, Port-Vendres, Banyuls-sur-Mer and Cerbère

To make the most of the diversity of this site, no less than 3 dives, from beginner to confirmed, at a depth of 26 meters.

Situated at about 50 m from the tip of Cape Peyrefite, partly in the reserve. Access by boat or from the southern part of Cape Peyrefite. The latter is difficult as you go through the public campsite and have to carry all the material. The site is not very wind sheltered. A small rock called Ramère is close to the coast to the south of the cape and allows you to practice snorkeling.

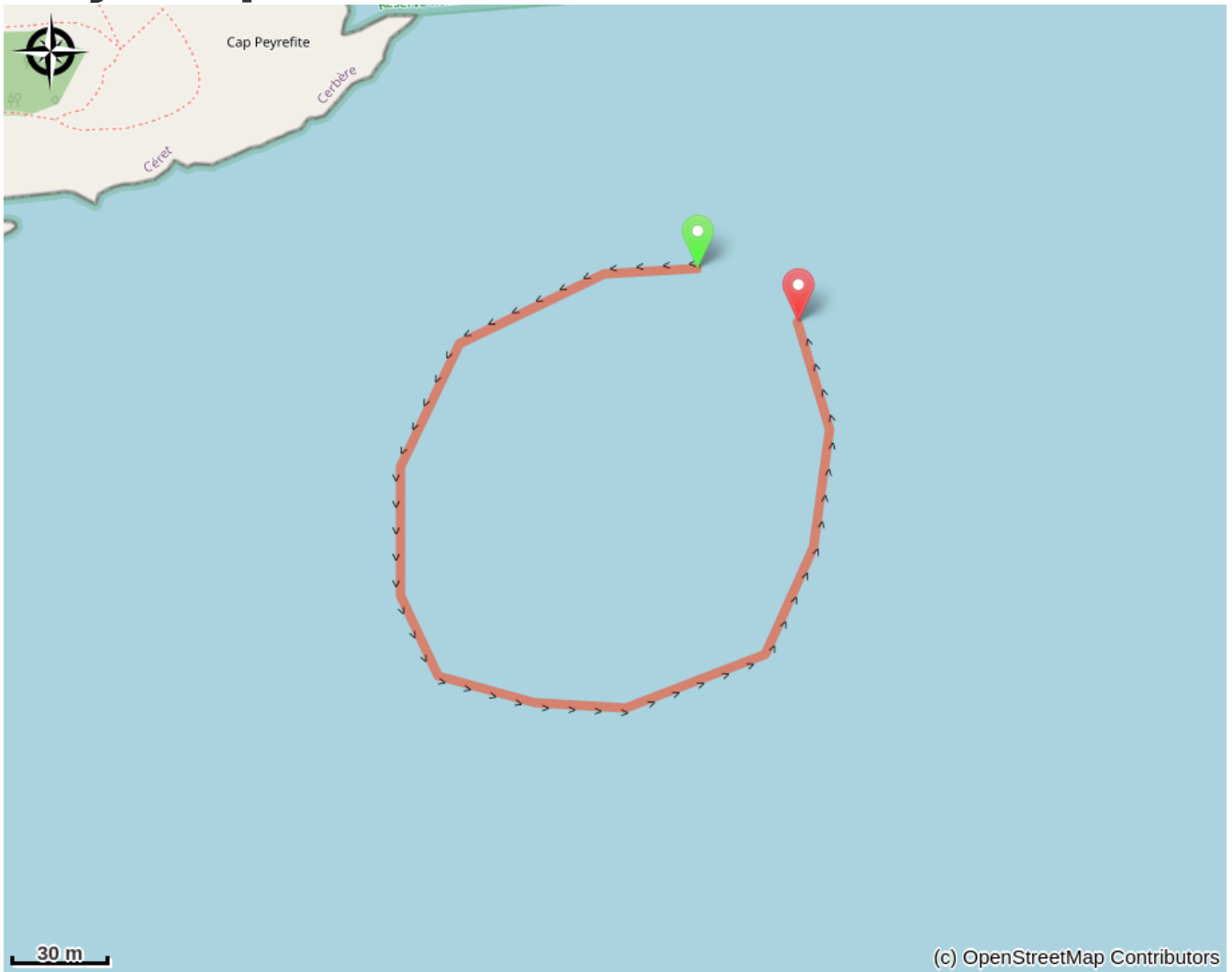
Explore various landscapes.

We first find large canyons and screes with coralligenous from 17 meters depth.. Then, we can observe rock walls from 12 to 20 meters forming small drops. Beyond, the coralligenous zone offers a large amount of cavities where lobsters, moray eels, wrasses and some groupers live. Enjoy the abundance of sea life, you might even see stingrays, depending on the season. The dive ends at 25-26 meters on the sand.

This exploration allows to discover this place steeped in history, thanks to some clues that recall a presence related to the Gallo-Roman era, and laden with life with the many species that find refuge. The adventure is waiting for you!

(F.Brun - Le Roussillon Sous-marin - Ed.GAP)

# On your path...



# All useful information

## **Advices**

Go safe and be supervised by professional scuba diving from all the ports of the Côte Vermeille.

### **Argelès-sur-Mer:**

Argelès Plongée: 06 78 48 76 30 / 06 83 89 96 90 - Résidence Santa Maria Rue des Matelots

Aquatile Plongée: 06 16 51 31 06 - Résidence Atalaya 2 Place Magellan

Archipel Plongée: 04 68 95 71 03 / 06 25 59 35 77 - 8 Résidence les Villégiales

La Sirène Plongée : 04 68 81 60 58 - Camping la Sirène, route de Taxo

### **Collioure:**

CIP Collioure: 04 68 82 07 16 - 24 Rue Ravin du Coma Xeric

### **Port-Vendres:**

Paradis des bulles: 06 70 55 69 18 - Quai Fanal

Tech of Plongée: 06 58 55 41 04 -2 Quai Fanal

CAP Port-Vendres: 04 34 12 09 27 - 4 rue Jules Ferry

Scuba Passion: 06 07 56 03 73 - Plage des Tamarins Route de la Jetée

### **Banyuls-sur-Mer:**

Rédéris Plongée: 04 68 88 31 66 - Quai A Port Parking Méditerranée

AquaBlue Plongée: 04 68 88 17 35 - 5 Quai Georges Petit

Plongée Bleue: 07 85 75 67 45- 10 quai Georges Petit

### **Cerbère:**

Aloès Plongée: 06 33 33 18 44 - Résidence les Aloes Cap Peyrefite

Plongée Cap Cerbère: 04 68 88 41 00 - Route d'Espagne

## **Environmental sensitive areas**

Along your trek, you will go through sensitive areas related to the presence of a specific species or environment. In these areas, an appropriate behaviour allows to contribute to their preservation. For detailed information, specific forms are accessible for each area.



### **Réserve Naturelle Marine de Cerbère-Banyuls**

Sensitivity period: January, February, March, April, May, June, July, August, September, October, November, Decembre

Réserve Naturelle Marine de Cerbère-Banyuls

## **Zone Natura 2000 Directive Habitat**

Sensitivity period:

Zone Natura 2000 Directive Oiseaux

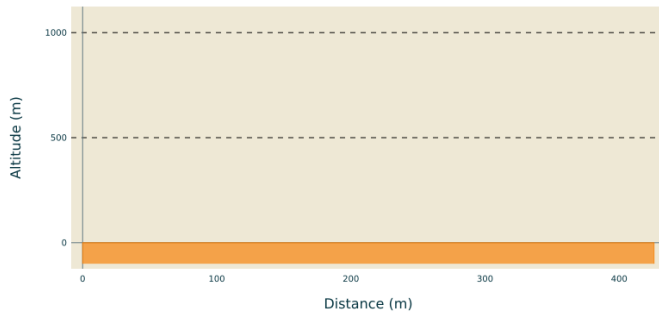


## Zone Natura 2000 Directive Oiseaux

Sensitivity period:

Zone Natura 2000 Directive oiseaux

### Altimetric profile



Min elevation 0 m  
Max elevation 0 m