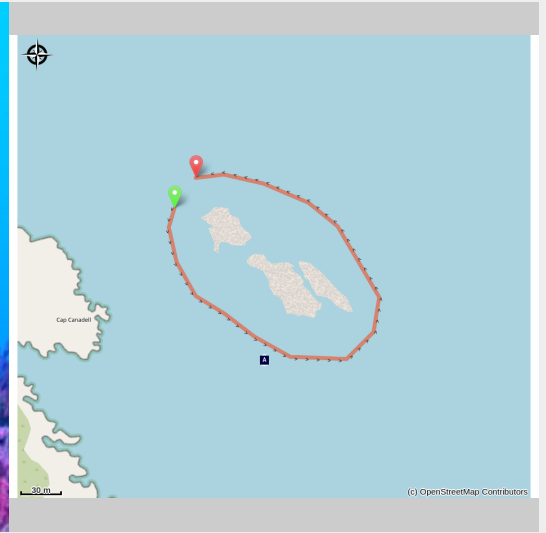


# The Islets of Cap Canadell

Côte Vermeille - CERBERE



Cap Canadell (Cap Cerbère)

*Discover the Canadells islands  
overlooking the bay of Cerbère*

Observe the sea bed and dive on this magical site between coral and red gorgonians

## Useful information

Practice : Scuba diving

Duration : 1 h

Length : 0.5 km

Difficulty : Medium

Type : Boucle

Themes : Fauna, Flora

# Trek

Departure : Port d'Argelès-sur-Mer, de Collioure, de Port-Vendres, Banyuls-sur-Mer et Cerbère

Arrival : Port d'Argelès-sur-Mer, de Collioure, de Port-Vendres, Banyuls-sur-Mer et Cerbère

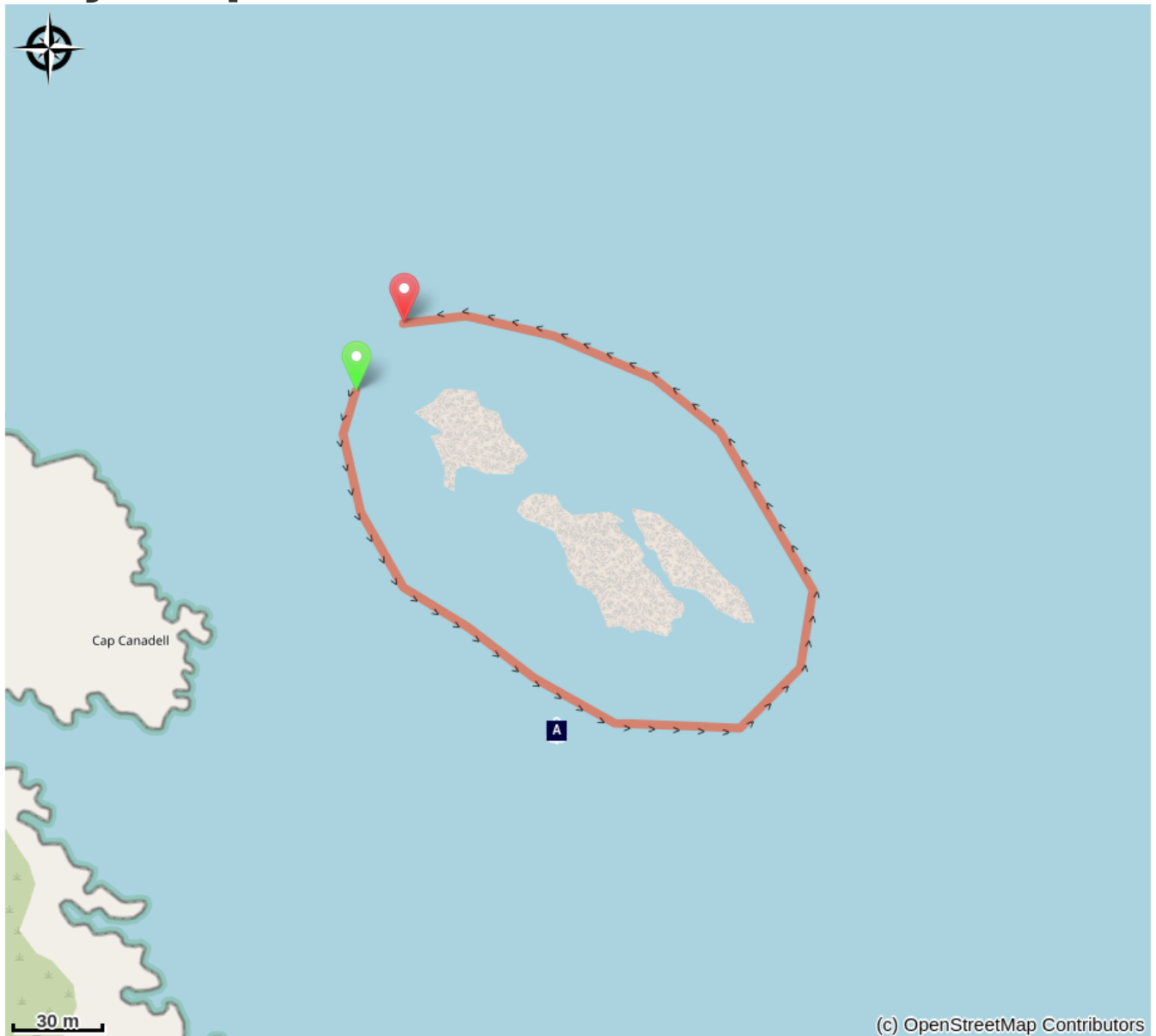
The Islets Campagies, located in front of the Cap Canadells, border the cove of Terrimbos to the south and protected from the wind, overlooking the bay of Cerbère.

This site is characterized by its main south islet which is a complete diving circuit. It offers the possibility to dive at shallow depth but also to go down to 36 meters depth. It's rare in the region to have such a configuration. A smaller islet situated at about 100 meters from the cap. Two buoys are placed near the site one at the south east point and the other on the south side. Several dive options are possible from both.

In the area where there can be violent currents it's not uncommon to cross a bank of barracudas or amberjacks. Massif rock forming a pretty canyon embellish the exploration. Further offshore, we can admire the iconic and beautiful red coral of Mediterranean as well as lobsters and other rockfishes.

In the zone of 18 meters of depth we discover "coralligène" formations. If this Mediterranean endemic substrat is home to moray eel congers and other nudibranchs it's also contains the secret of red coral loved by jewelers but well protected today. This red coral can be observed in areas 35-40 meters where it coexists with the magnificent red gorgonians.

# On your path...



 Le Sahel (A)

# All useful information

## **Advices**

Go safe and be supervised by professional scuba diving from all the ports of the Côte Vermeille.

### **Argelès-sur-Mer:**

Argelès Plongée: 06 78 48 76 30 / 06 83 89 96 90 - Résidence Santa Maria Rue des Matelots

Aquatile Plongée: 06 16 51 31 06 - Résidence Atalaya 2 Place Magellan

Archipel Plongée: 04 68 95 71 03 / 06 25 59 35 77 - 8 Résidence les Villégiales

La Sirène Plongée : 04 68 81 60 58 - Camping la Sirène, route de Taxo

### **Collioure:**

CIP Collioure: 04 68 82 07 16 - 24 Rue Ravin du Coma Xeric

### **Port-Vendres:**

Paradis des bulles: 06 70 55 69 18 - Quai Fanal

Tech of Plongée: 06 58 55 41 04 -2 Quai Fanal

CAP Port-Vendres: 04 34 12 09 27 - 4 rue Jules Ferry

Scuba Passion: 06 07 56 03 73 - Plage des Tamarins Route de la Jetée

### **Banyuls-sur-Mer:**

Rédéris Plongée: 04 68 88 31 66 - Quai A Port Parking Méditerranée

AquaBlue Plongée: 04 68 88 17 35 - 5 Quai Georges Petit

Plongée Bleue: 07 85 75 67 45- 10 quai Georges Petit

### **Cerbère:**

Aloès Plongée: 06 33 33 18 44 - Résidence les Aloes Cap Peyrefite

Plongée Cap Cerbère: 04 68 88 41 00 - Route d'Espagne

## **Environmental sensitive areas**

Along your trek, you will go through sensitive areas related to the presence of a specific species or environment. In these areas, an appropriate behaviour allows to contribute to their preservation. For detailed information, specific forms are accessible for each area.

### **Zone Natura 2000 Directive Habitat**

Sensitivity period:

Zone Natura 2000 Directive Oiseaux

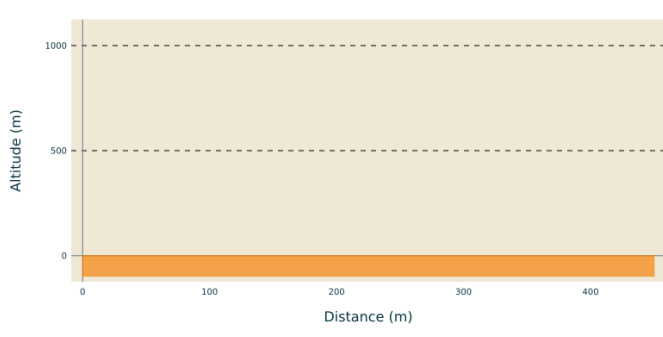


### **Zone Natura 2000 Directive Oiseaux**

Sensitivity period:

Zone Natura 2000 Directive oiseaux

## **Altimetric profile**



Min elevation 0 m  
Max elevation 0 m

# On your path...

---



## ⚓ Le Sahel (A)

Built in 1857, the Sahel is a beautiful sailing ship 54 meters long very well equipped for the time. It has a rare system that combines water vapor and ether. This saves coal and transportation space. August 22, 1863, the Sahel returns from Oran and goes up the Catalan Coast face a very strong tramontane. It will then run aground on the Anse de Cerbère but the passengers will be rescued by the local population. (F.Brun - The Roussillon Underwater - Ed.GAP)  
Attribution : Francois Brun