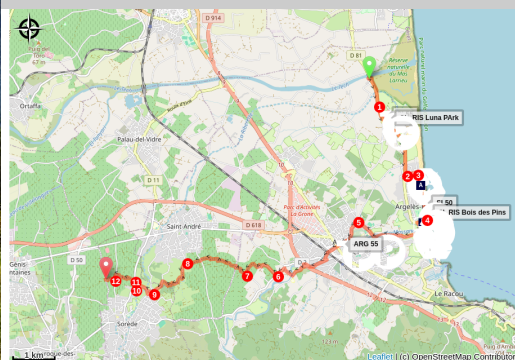


# Eurovélo 8 (2020) from Argelès-sur-Mer to Sorède

Albères - ARGELES SUR MER



(OTI)

*This very varied course combines the seaside and the fields and vineyards of the Piedmont de l'Albera.*

After crossing Argelès, a very lively seaside resort, furrow through fields and vineyards to reach Sorède, a typical village of Albères.

## Useful information

Practice : Cycling

Duration : 2 h 30

Length : 16.4 km

Trek ascent : 122 m

Difficulty : Medium

Type : Traversée

Themes : Fauna, Point de vue,  
Piste Cyclable

Departure : Argelès-sur-mer

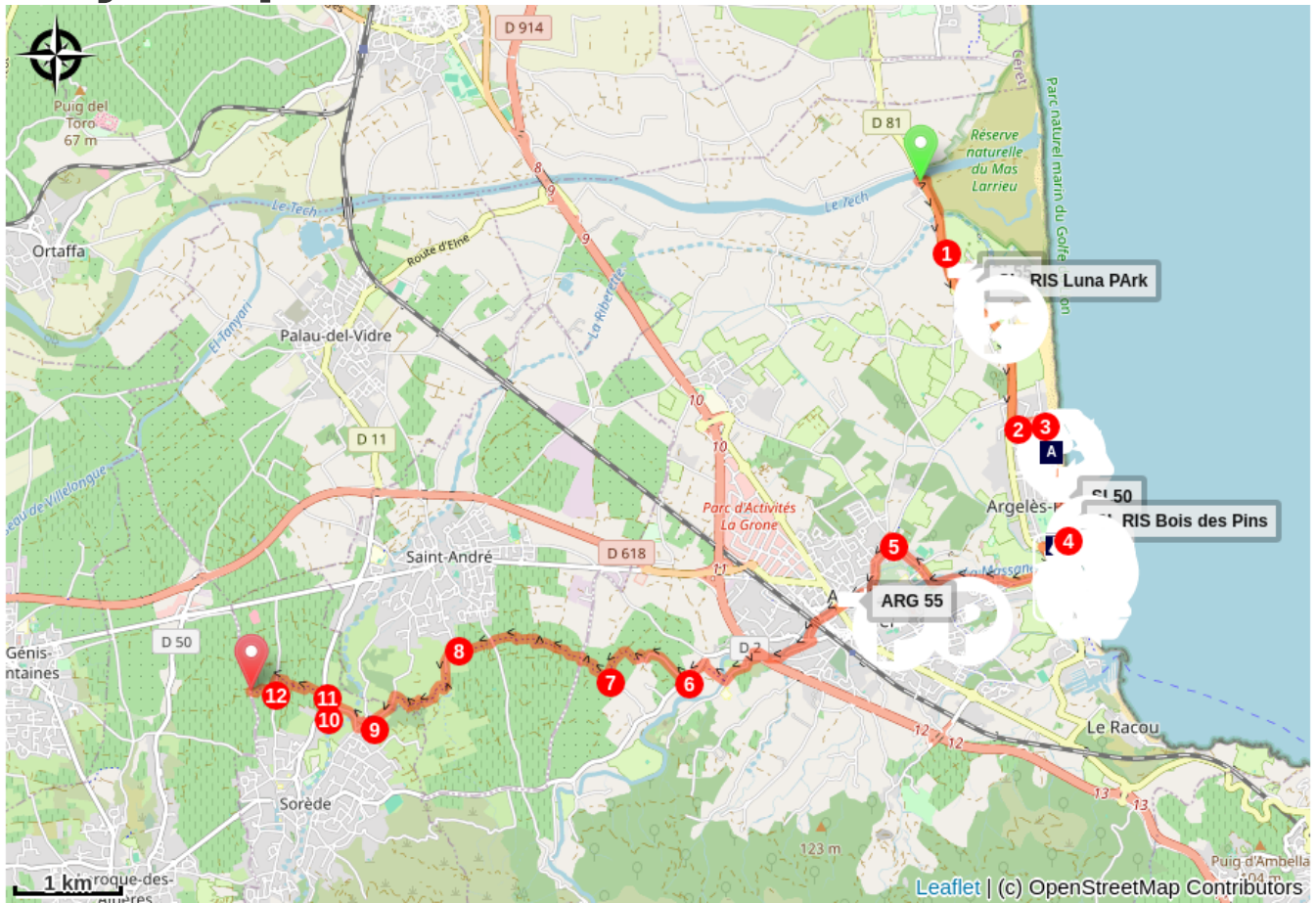
Arrival : Sorède

1. Follow the cycle path along the D81 on the left, in the direction of Argelès. Go over the blue bridge of Riberette and go along the Le Littoral campsite. At the Luna Park roundabout, continue straight on on the coastal road.
2. At the next roundabout, turn left towards Boulevard de la Méditerranée, while staying on the cycle path.
3. At the end of the boulevard, continue straight on a gravel passage, between two buildings and continue to the seaside promenade. Continue to the left on this promenade which runs along the beach, to the left. At 500 m, you will find yourself on the green promenade. //! \\ The area is shared with pedestrians and it is very busy in summer //! \\
4. After the funfair car park (on the right), turn right on Avenue des Pins. At the Argelès-sur-Mer tourist office roundabout turn left onto Avenue des Platanes. Then, at the Arrivée roundabout, take the first exit, on the right, and follow the large Avenue Charles de Gaulle to the petrol station where you have to turn right, Route de la Mer. At the roundabout from the sports complex turn right, Avenue Molière.
5. At the next roundabout, take the third exit, rue des Trabucaires. At this level, the cycle path runs along the street to the right. At the roundabout, cross the road towards the sidewalk opposite to follow the track and take the second exit, rue du 14 Juillet. Keep going straight. You cross a ford. Immediately after, turn right. The cycle path runs along a one-way street on the left and La Massane on the right. Pass under the bridge and continue under the pines. The track becomes at this level a dirt road. //! \\ Section shared with pedestrians. //! \\ Cross the small footbridge at the end of the car park and continue straight until the road to Sorède. When you get there, go left then the first right, rue du Moulin Mars and continue on rue des Micocouliers then on chemin du Roua which passes under the D914. You pass in front of the Auberge du Roua. Continue then turn right crossing the river then join the road to Sorede where you will leave on the left.
6. Turn on the first street on the right which snakes and arrives at Chemin des vignes.
7. Turn right and arrive at Chemin de la Carrerasse. Go right then take the first left. Continue on the path which crosses the Chemin de la Pave.
8. Arrived at the level of the river, cross and go on the left on rue de les Coscolledes. Continue, then cross the river again and arrive on the Chemin de Saint-André. Be careful, you will cross an area with houses and possibly traffic. Go left.
9. After the houses, take the second street on the right then at the end of the street turn left and take the first street on the right after a hairpin bend. Pass over the river, "Tassio" on a ford.
10. Go up and cross the road to Palau (D11), turn right (speed bump for traffic).
11. Turn left to join the Chemin de la Petite Gabarre, go to the left.

12. Then turn right to join the path of la gavarra baixa.

[\\* Correspondence for the Albères loop - the trades of yesterday and today from this point](#)

# On your path...



 The Camp Monolith (A)

 Pine Wood (B)

# All useful information

## **Advices**

Respect the highway code. Drink regularly. Please note, the 2 and a half hour trip is only given for the outward journey.

## **Environmental sensitive areas**

Along your trek, you will go through sensitive areas related to the presence of a specific species or environment. In these areas, an appropriate behaviour allows to contribute to their preservation. For detailed information, specific forms are accessible for each area.

### **Zone Natura 2000 Directive Habitat**

Sensitivity period:

Zone Natura 2000 Directive Oiseaux

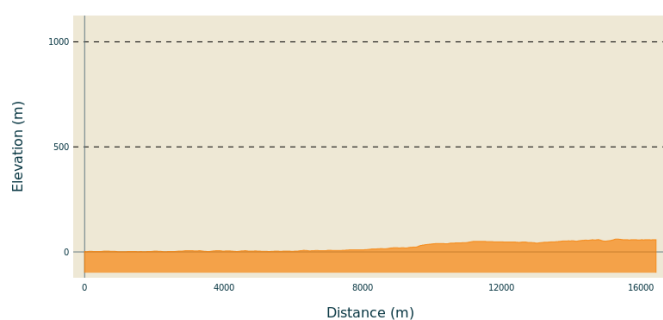


### **Réserve Naturelle du Mas Larrieu**

Sensitivity period: January, February, March, April, May, June, July, August, September, October, November, Decembre

Réserve Naturelle du Mas Larrieu

## **Altimetric profile**



Min elevation 1 m  
Max elevation 61 m

## **Access**

D81

## **Advised parking**

Funfair car park

# On your path...

---



## The Camp Monolith (A)

The monolith at the camp marks the southern entrance to the Argelès-sur-Mer camp, which was opened in early February 1939 to intern some of the refugees who had fled Spain during "La Retirada." Over 100,000 refugees, including women and children, passed through the camp until summer 1939, all sleeping directly on the sand in makeshift shelters. The camp was reorganized and reopened following the declaration of war in September 1939. After France's defeat in June 1940, the camp became more international, with refugees from Northern and Eastern Europe, including foreign Jews, and the return of Spanish workers. The Vichy government used it as one of the main camps in southern France, interning French nomads there in the autumn of 1940.

People from over fifty nationalities lived together behind the barbed wire at Argelès. These "undesirables" were confined on a beach where living conditions were extremely harsh, with high mortality rates, particularly among infants. In 1941, the Ministry of the Interior transferred most of the internees to the Rivesaltes camp and deported some Spaniards and international brigadiers to camps in Algeria. By June 1942, with only a hospital remaining, the Argelès-sur-Mer camp was converted into a French Youth Work Camp before closing permanently in November. Erected in 1999, this monolith pays tribute to all the refugees who passed through the camp.

Attribution : Mémorial du camp d'Argelès

---



## Pine Wood (B)

If you're looking for a place to relax in the shade of maritime pines, this is the perfect spot. You'll also find picnic facilities just a few meters from the beach shopping alleys.

Attribution : Stéphane Ferrer